



JAPCC Air Forum – BATTLESPACE MANAGEMENT

Air Commodore Garfield Porter



Schedule

- 0830 – 0840: Welcoming Remarks
- 0840 – 0845: Admin
- 0845 – 1005: BSM Defined (**Ends**)
 - **JAPCC**
- 1005 – 1030: Coffee
- 1030 – 1215: Operational Aspects (**Ways**)
 - **SHAPE**
- 1215 – 1315: Lunch
- 1315 – 1445: Accomplishing BSM (**Means**)
 - **NC3A**
- 1445 – 1500: Coffee
- 1500 – 1530: Review and Wrap-up



JAPCC Air Forum – BATTLESPACE MANAGEMENT

Air Commodore Garfield Porter



The Problem with Airmen

“Air Power is the most difficult of military force to measure or even to express in precise terms. The problem is compounded by the fact that aviation tends to attract adventurous souls, physically adept, mentally alert and pragmatically rather than philosophically inclined.”

The Second World War, Volume 1, 1948.





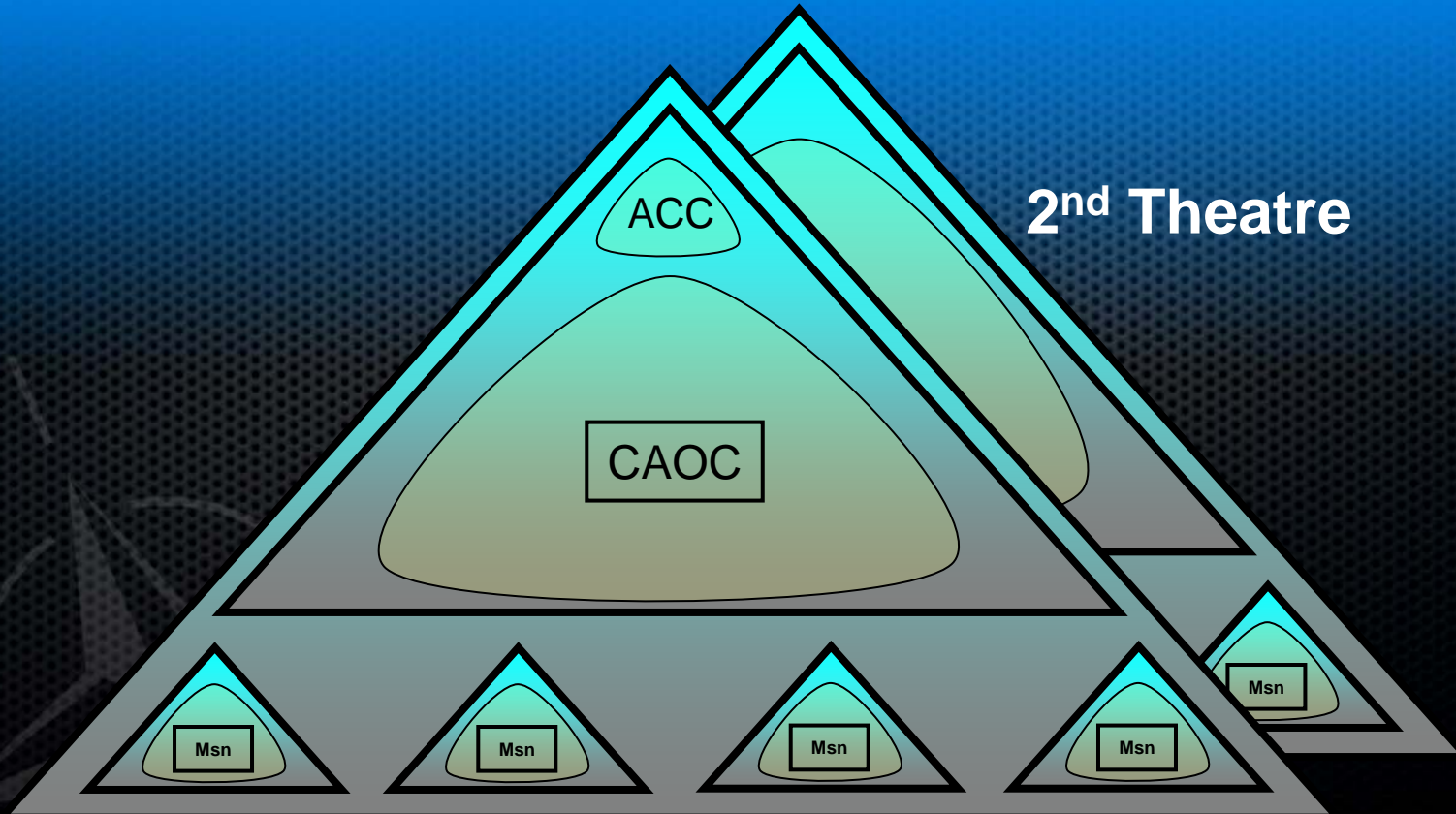
Scope

- Command of the Air Environment Today
- Changes
- Command of the Air Environment Tomorrow
- Questions





Air Command Today





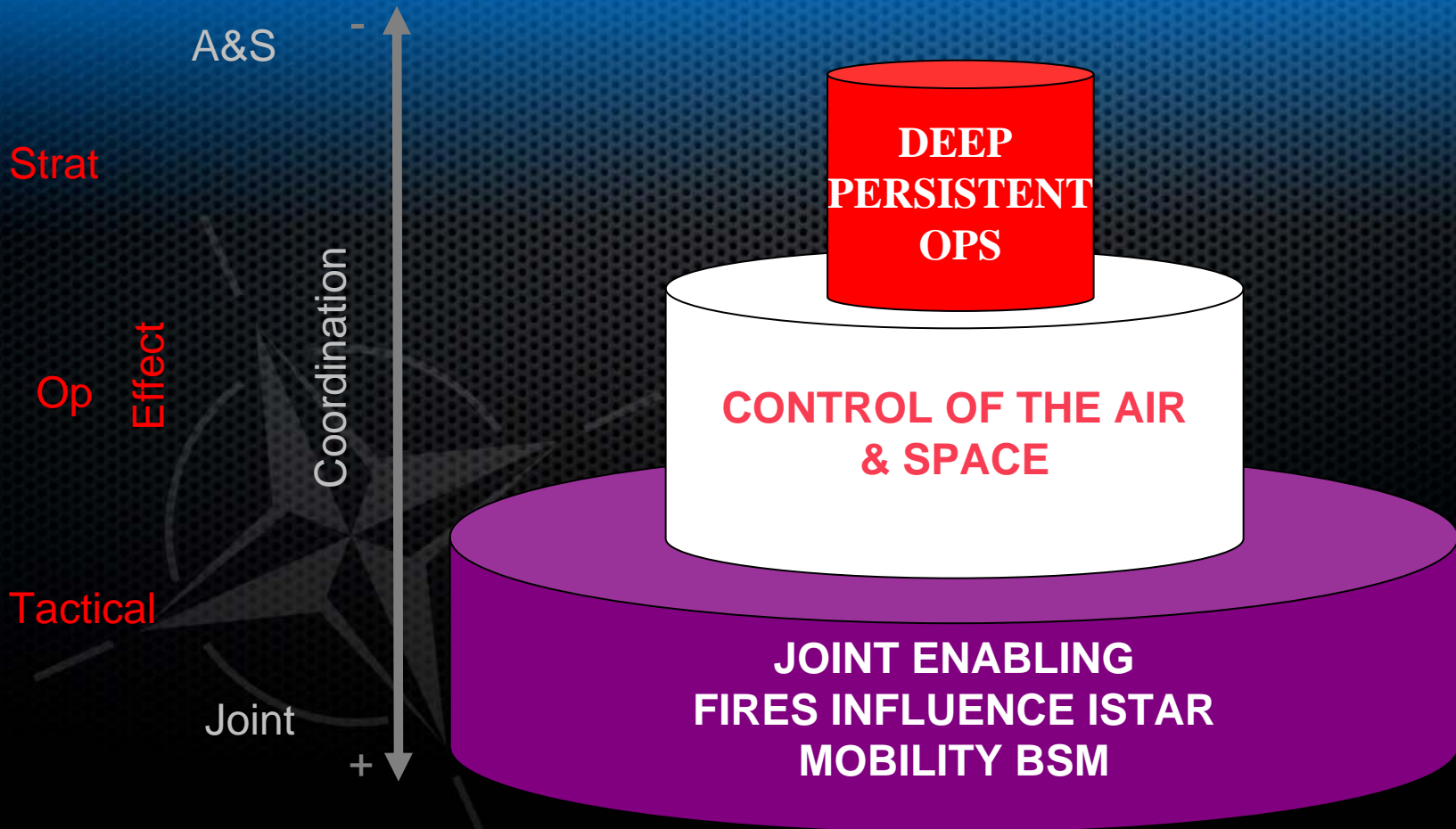
Changes

- Joint/Interagency
- Effects Based Thinking
- Network Enabling





Air and Space Themes

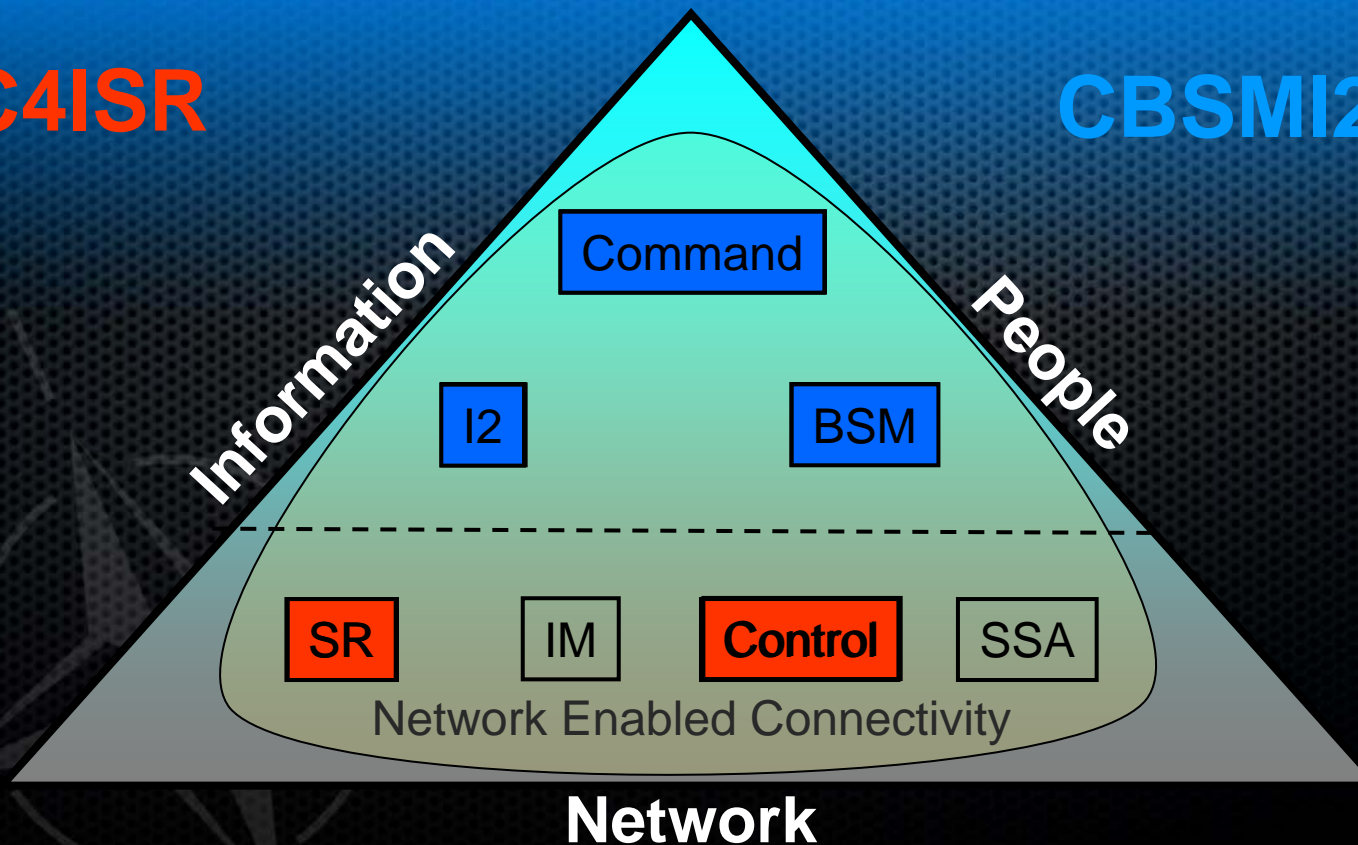




Model for Command

C4ISR

CBSMI2



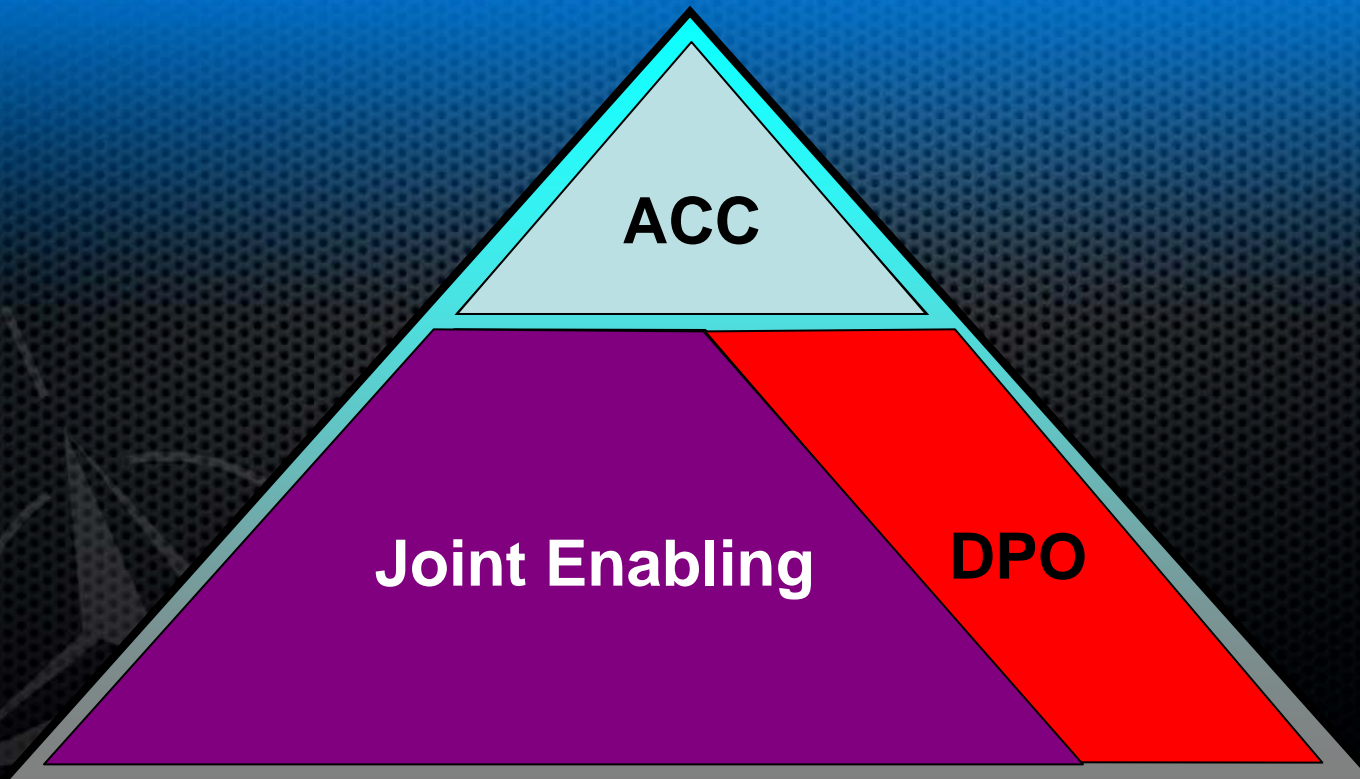


Command in Tomorrow's Air Environment?



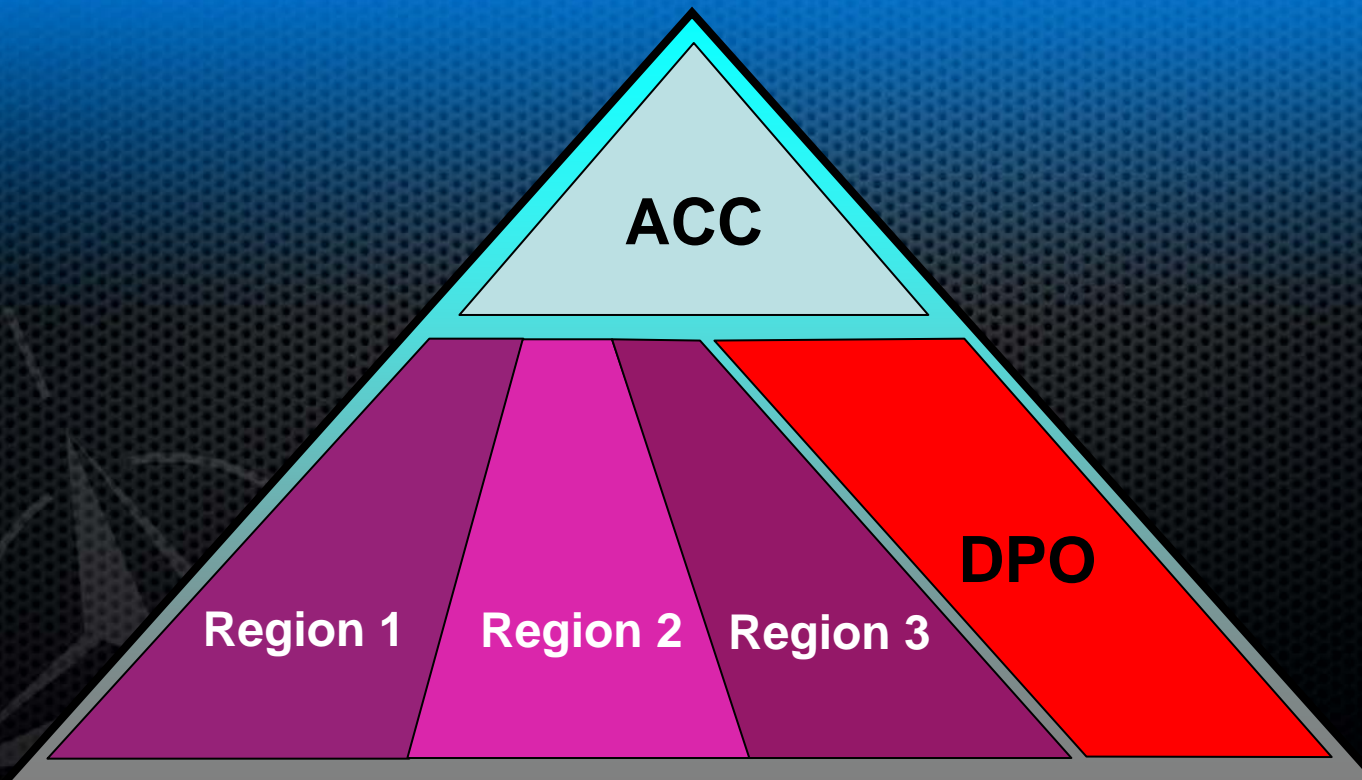


Command in Tomorrow's Air Environment?



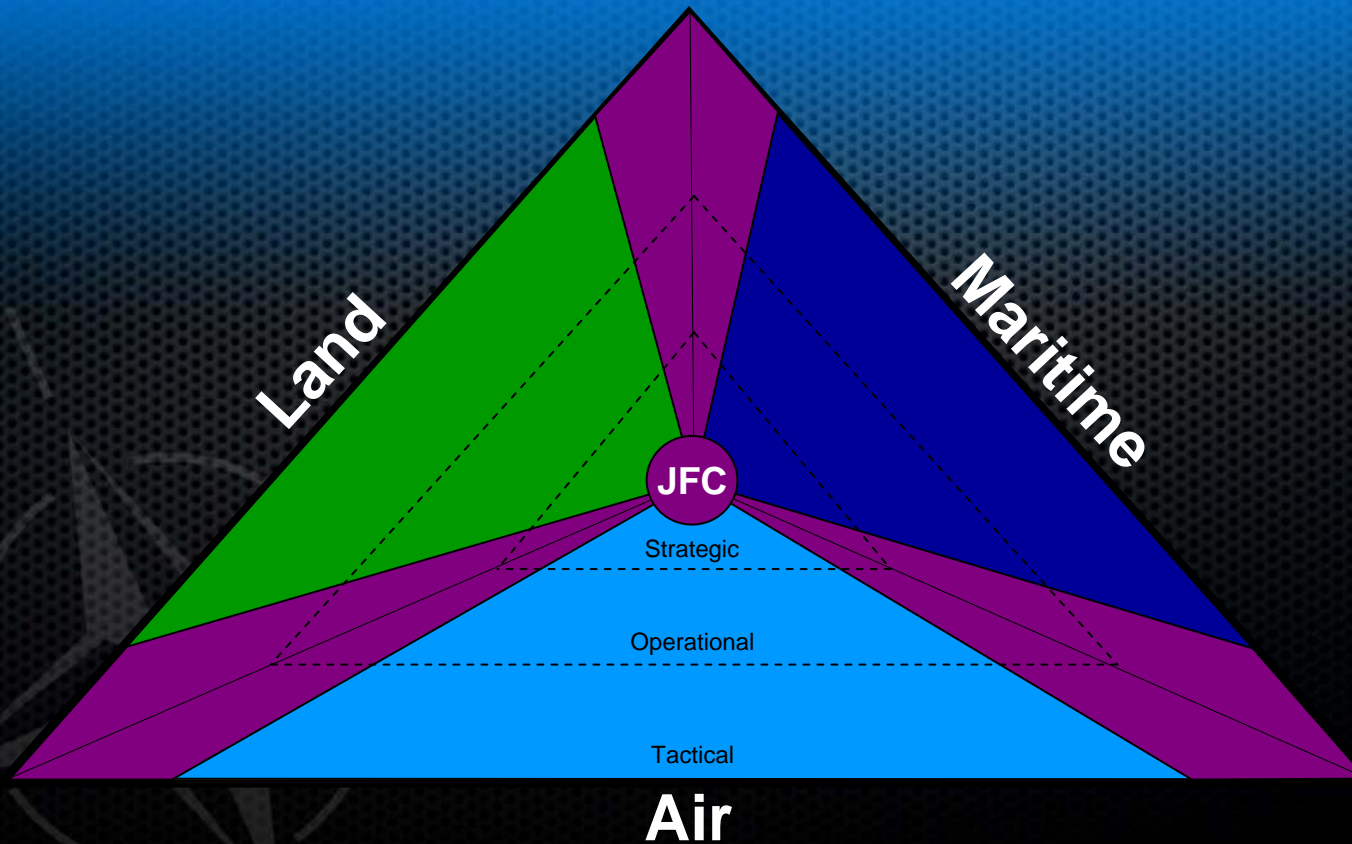


Command in Tomorrow's Air Environment?





Joint Command





Questions



Schedule

- 0830 – 0840: Welcoming Remarks
- 0840 – 0845: Admin
- 0845 – 1005: BSM Defined (**Ends**)
 - **JAPCC**
- 1005 – 1030: Coffee
- 1030 – 1215: Operational Aspects (**Ways**)
 - **SHAPE**
- 1215 – 1315: Lunch
- 1315 – 1445: Accomplishing BSM (**Means**)
 - **NC3A**
- 1445 – 1500: Coffee
- 1500 – 1530: Review and Wrap-up